



Frequently Asked Questions

Is Indigo FM a community radio station?

No. We are classed as a LOCAL radio station. The difference being the type of radio licence we hold. Indigo FM owns five (5) LPON (Low Power Open Narrowcasting) licences. As the acronym LPON indicates, this licence category has restrictions such as power and also antenna height that restrict transmission. Each of our sites typically have a transmission radius on FM of around 5km from our studio.

A COMMUNITY radio station operates using a COMMUNITY broadcasting licence. The power and antenna height conditions on these licences are quite generous, hence they can often be heard on FM 30km from the studio location.

With the opportunities offered by technology and the internet, we operate along similar lines to a community radio station - community focused, heavy reliance on volunteering.

Accessing a digital stream of Indigo FM from any device which has internet connection, overcomes the geographical / power limitations which are conditions of our licence.

Where is Indigo FM located?

We own 5 licences for the towns of Beechworth, Chiltern, Kiewa-Tangamblanga, Rutherglen and Yackandandah. Each of these allows us to transmit on 88.0 FM. Currently we have radio studios for each of these sites, except Chiltern. Our locations are:

- Beechworth - Bunya House (109 Ford St)
- Kiewa-Tangambalanga - Pharmacy Complex (50 Kiewa East Rd)
- Rutherglen - Ka-Ching Co-Working Space (104 Main St)
- Yackandandah - Community Centre (29 High St)
- Chiltern - we are keen to explore potential site options

Can I listen in via the internet?

Yep you sure can. Our stream URL is:

<https://internetradio.indigofm.au:8174/stream>

What does “100% volunteer run” mean?

We have no paid staff. All Indigo FM officials and presenters volunteer their time to contribute to our radio station.

How much does it cost to join Indigo FM?

Our rates start at \$20pa for Concession / Student and range up to \$100pa for Businesses (which includes daily ads and all production costs). Further details are [here on our Membership module](#).

Is there a Training program to become a presenter and if so, is there a cost?

We offer free training to all new presenters. For some this might take as little as 2-3 hours, whilst for others it may take up to 15 hours. We understand that each new presenter is unique and so we aim to customise the training accordingly until a level of confidence and competence is attained.

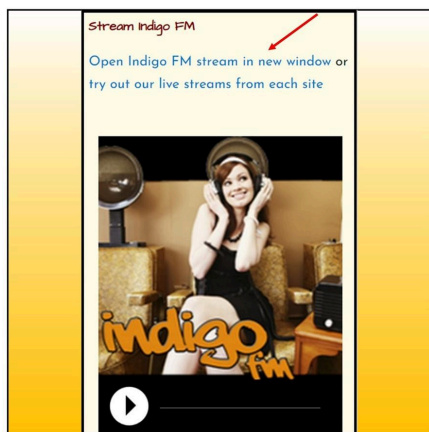
When did Indigo FM commence transmission?

Indigo FM started doing test transmissions in 2009. We became officially incorporated as an organisation on 2 June 2010. We refer to that date as our official commencement date of transmission.

Could Indigo FM host my podcast?

Do you have an existing podcast or do you want to learn how to get into podcasting? All of our radio shows are recorded and made available as podcasts. Come and talk to us about your podcast idea. Drop us a line at indigofmradioinfo@gmail.com.

How do I tune in via live stream?



Head to our website <https://indigofmradio.com/> To the right on a desktop you will see the audio player below. On a mobile device, scroll down a couple of screens to locate it. Either click the play arrow at the foot of the player or the hyperlink as indicated by the red arrow in the image on the left.

You can also click these links, each one offers a different localised version.

General - <https://internetradio.indigofm.au:8174/stream>

Beechworth - <https://beechworthstream.indigofm.au:8176/stream>

Kiewa-Tangam - <https://kiewa-tangamstream.indigofm.au:8092/stream>

Rutherglen - *** coming soon

Yackandandah - <https://yackandandahstream.indigofm.au:8166/stream>

How do I tune in via FM Radio?

If you reside in Beechworth, Kiewa-Tangambalanga, Rutherglen or Yackandandah you can tune in via 88.0FM. Please understand that it is a low power FM signal, which means that you could be just 1-2km from our studio and have trouble with reception, whereas the signal sometimes can be picked up 7-10km from the studio. Audiowaves can be a bit unpredictable.

What style/s of music does Indigo FM play?

We play many styles of music - largely by independent artists. Independent meaning not signed to major labels. Styles include indie pop/rock, Americana, blues, folk/acoustic, hip-hop, electronic, dream pop/shoegaze, jazz, country, soul etc. Indigo FM playlists boast 60% Australian content of which 15% is by Indigenous artists.

Does the Council fund Indigo FM?

Indigo FM has no formal ties to Indigo Shire Council. From time to time we have been recipients of Council's Community Grants program. Having said this, Council does offer some valuable support in areas such as premises. Since 2017 we have been housed in Beechworth in a former Child and Maternal Health building.

Who runs Indigo FM?

Indigo FM is a not for profit, incorporated Association run by a volunteer Committee of Management who meet bi-monthly. Each of our 4 sites has a Site Co-ordinator. From time to time we establish Sub-Committees and Working Parties to focus on key operational areas (eg Marketing and Tech-Programming) or projects. [Further details on the Current Committee can be found here.](#)

Where can I access Indigo FM Podcasts?

Our podcasts are available through [Podomatic](#) where they are listed in chronological order (latest podcasts at the top). They can also be accessed via popular Streaming apps like [Spotify](#), [Deezer](#), [Amazon Music](#), [iHeartRadio](#) and [Boomplay](#). Within the actual Apps Home page, if you type “Indigo FM Radio Show Podcasts” into the search box, you will arrive at our Podcasts.

Do you have a question not covered in our FAQ's? If so, please feel free to email it through on indigofmradioinfo@gmail.com.